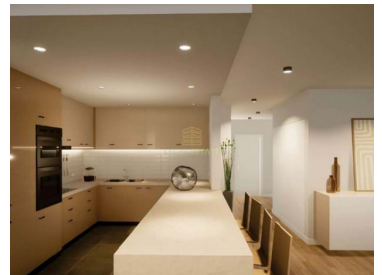




Funchal (Sé) - Apartment



2

Bedrooms



2

Bathrooms



104,27

Area (m²)

390 000 €

(EUR €)

Lourencinha II T2

The Apartamentos Lourencinha development is a new construction consisting of 16 housing units, in the typologies T2 and T3.

Located in Câmara de Lobos, this project offers large areas, high quality construction and finishes with excellent materials.

Situated just 3 minutes from the motorway, it provides easy access to both Funchal and Ribeira Brava.

The region is privileged for its pleasant climate and proximity to various services.

Don't waste time and schedule your visit!



Your Legal Estate

Legal Estate

+351 939 079 579 ²

yourlegalestate@gmail.com

T +351 969 476 679 ² · E geral@legalestate.pt

Rua da Carreira 152 9000-042

AMI 20398

¹ (Call to national fixed network) | ² (Call to national mobile network)



LE-21-24

Reference

Scan the QR code to view the property



Property Features



Your Legal Estate

Legal Estate

+351 939 079 579 ²

yourlegalestate@gmail.com

T +351 969 476 679 ² · E geral@legalestate.pt

Rua da Carreira 152 9000-042

AMI 20398

¹ (Call to national fixed network) | ² (Call to national mobile network)